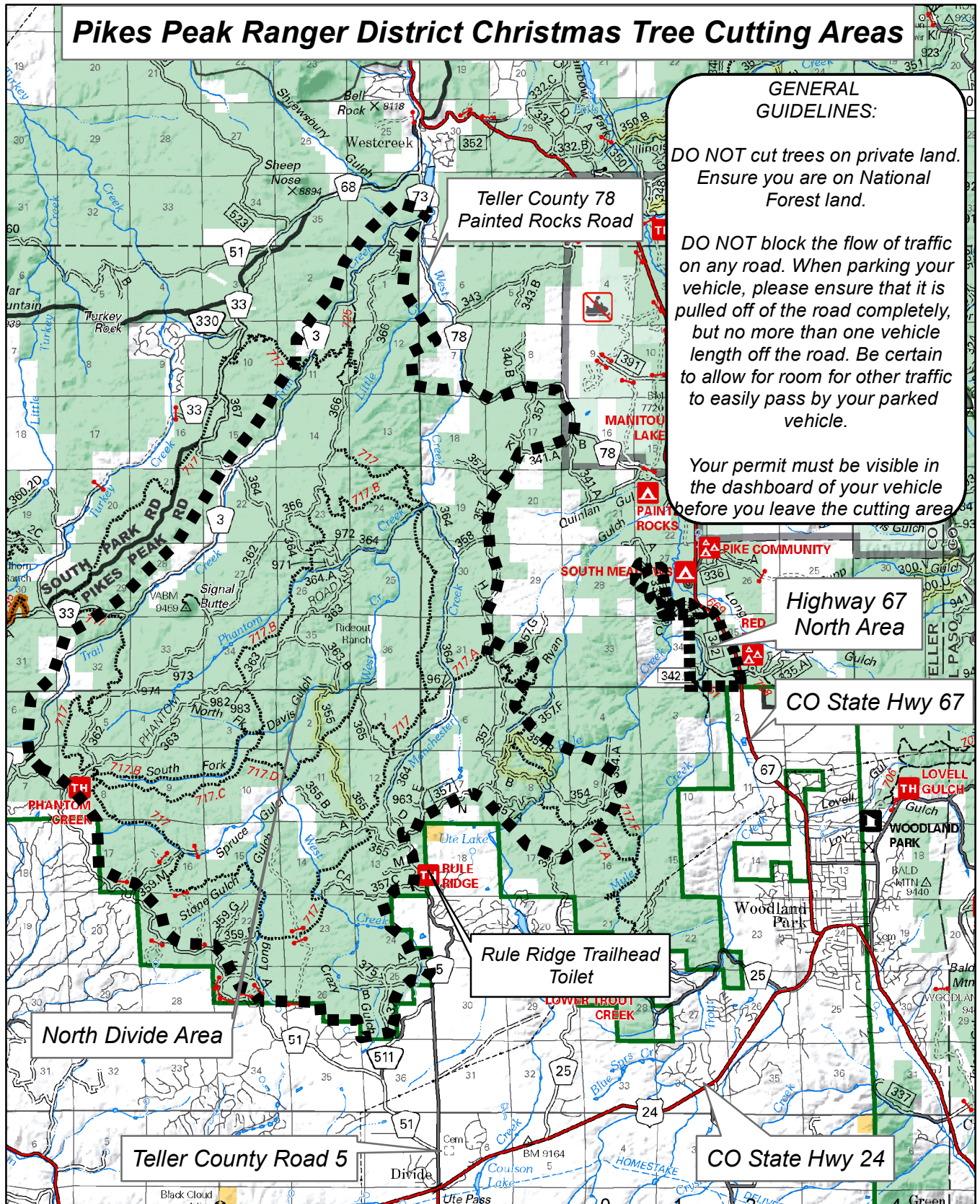


Pikes Peak Ranger District Christmas Tree Cutting Areas



GENERAL GUIDELINES:

DO NOT cut trees on private land. Ensure you are on National Forest land.

DO NOT block the flow of traffic on any road. When parking your vehicle, please ensure that it is pulled off of the road completely, but no more than one vehicle length off the road. Be certain to allow for room for other traffic to easily pass by your parked vehicle.

Your permit must be visible in the dashboard of your vehicle before you leave the cutting area.

Legend

■ ■ ■ Cutting Boundary



Map Disclaimer: This map is intended to depict physical features as they generally appear on the ground and may not be used to determine title, ownership, legal boundaries, legal jurisdiction, including jurisdiction over roads or trails, or access restrictions that may be in place on either public or private land. Obtain permission before entering private lands, and check with appropriate government offices for restrictions that may apply to public lands. Lands, roads and trails within the boundaries of the National Forest may be subject to restrictions on motor vehicle use. Obtain a Motor Vehicle Use Map, or inquire at the local Forest Service Office for motor vehicle access information. Natural hazards may or may not be depicted on the map, and land users should exercise due caution. This map may not be suitable for navigation. For more information, contact the Pike & San Isabel NF, Cimarron & Comanche NG, Pueblo, CO. (719) 553-1400.